

Plat No. 7

FOR CONTINUATION OF PARCEL SEE PLAT NO. 7

Plat No. 16

Plat No. 12

RIVER

(SEACONNET RIVER)

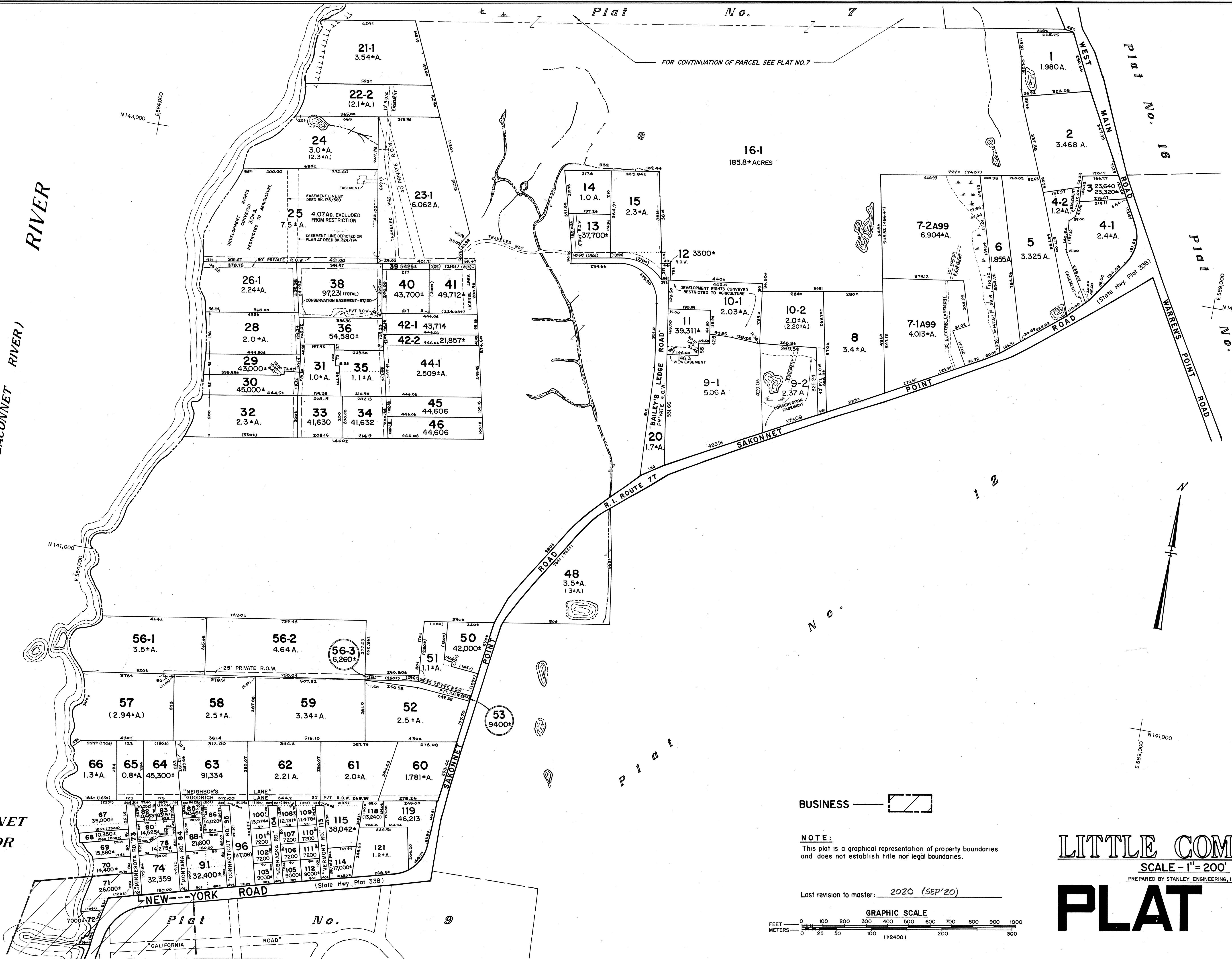
SAKONNET

SAKONNET HARBOR

N 143,000
E 589,000

N 141,000
E 589,000

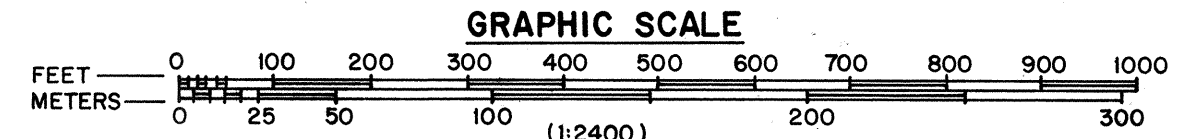
N 141,000
E 589,000



BUSINESS

NOTE:
This plat is a graphical representation of property boundaries and does not establish title nor legal boundaries.

Last revision to master: 2020 (SEP'20)



LITTLE COMPTON

SCALE - 1" = 200'

PREPARED BY STANLEY ENGINEERING, INC.

PLAT 8

(OLD 16 & Portions 17)