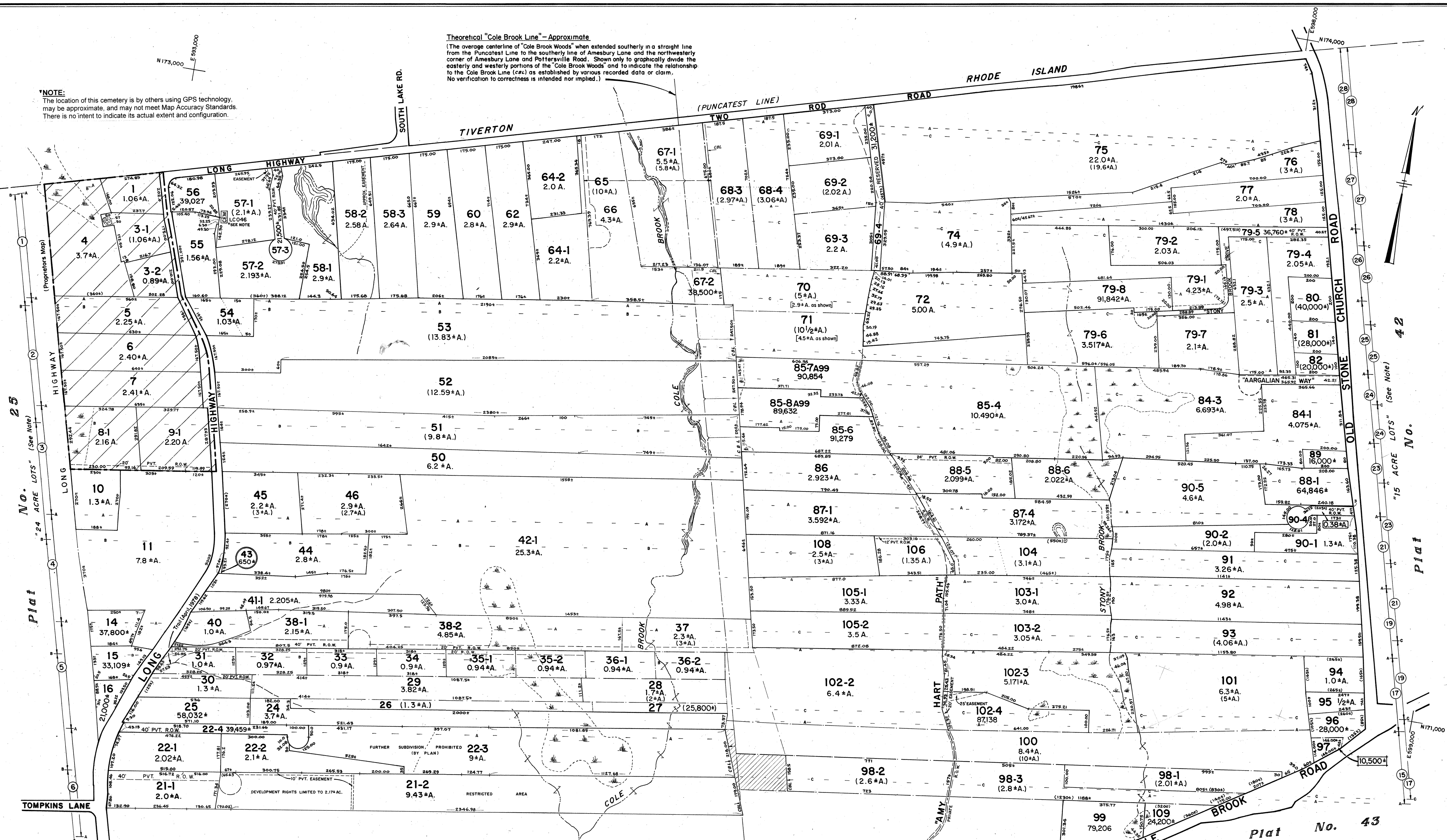


***NOTE:**
The location of this cemetery is by others using GPS technology, may be approximate, and may not meet Map Accuracy Standards. There is no intent to indicate its actual extent and configuration.

Theoretical "Cole Brook Line" - Approximate
(The average centerline of "Cole Brook Woods" when extended southerly in a straight line from the Puncatest Line to the southerly line of Amesbury Lane and the northwesterly corner of Amesbury Lane and Pottersville Road. Shown only to graphically divide the easterly and westerly portions of the "Cole Brook Woods" and to indicate the relationship to the Cole Brook Line (CBL) as established by various recorded data or claim. No verification to correctness is intended nor implied.)

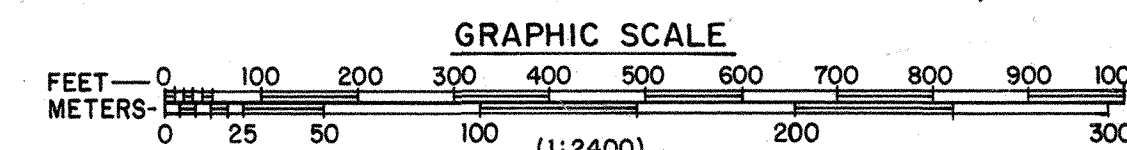


NOTE:
Theoretical lot lines as established by Proprietors Map and Records Book:
- A - Using actual called for distances from Puncatest Line;
- B - Using adjusted distances prorated from Puncatest Line to Amesbury Lane;
- C - Using adjusted distances prorated from Puncatest Line to the southerly line of Proprietors Lot 13, as established by Plan Book 6 page 16.
Shown only to indicate relationship to actual property line locations, no verification to correctness is intended nor implied.
CBL - Indicates Cole Brook Line as indicated by recorded data or claim for this parcel.
This plat is a graphical representation of property boundaries and does not establish title nor legal boundaries.
See Plat Index for legend to map symbols.

Last revision to master: 2019 (JAN'20)

Trail as traveled April, 1978,
APPROXIMATE
JUDGED PUBLIC 1996
Ref. Deed BK 102/615

BUSINESS



LITTLE COMPTON

SCALE - 1" = 200'

PREPARED BY STANLEY ENGINEERING, INC.

PLAT 41