

Plat No. 41

TOMPKINS LN.

LONG HIGHWAY

LONG HIGHWAY

LONG HIGHWAY

LONG HIGHWAY

LONG HIGHWAY

LONG HIGHWAY

LONG HIGHWAY

LONG HIGHWAY

LONG HIGHWAY

LONG HIGHWAY

LONG HIGHWAY

LONG HIGHWAY

LONG HIGHWAY

LONG HIGHWAY

LONG HIGHWAY

LONG HIGHWAY

LONG HIGHWAY

LONG HIGHWAY

LONG HIGHWAY

LONG HIGHWAY

LONG HIGHWAY

LONG HIGHWAY

LONG HIGHWAY

LONG HIGHWAY

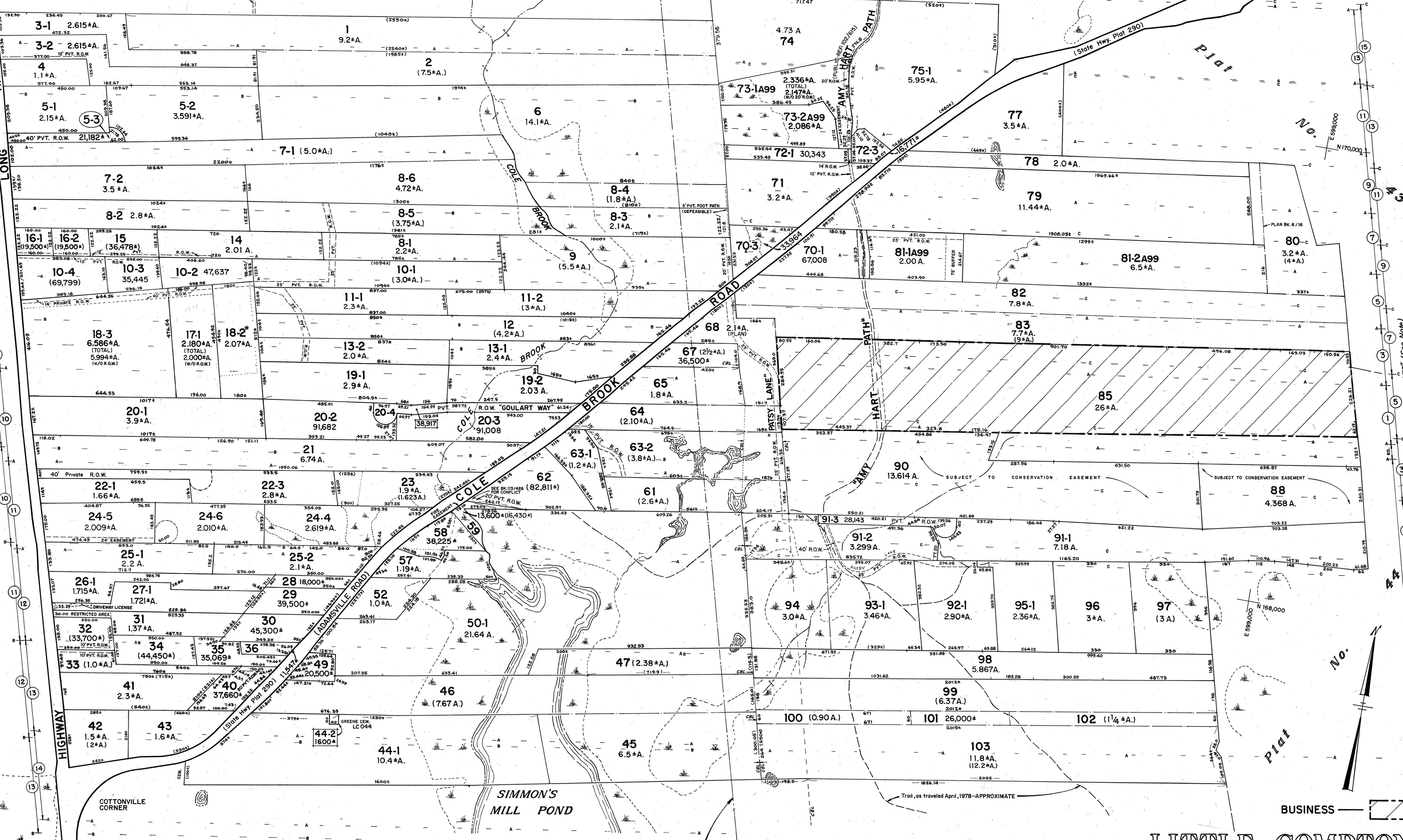
LONG HIGHWAY

LONG HIGHWAY

LONG HIGHWAY

LONG HIGHWAY

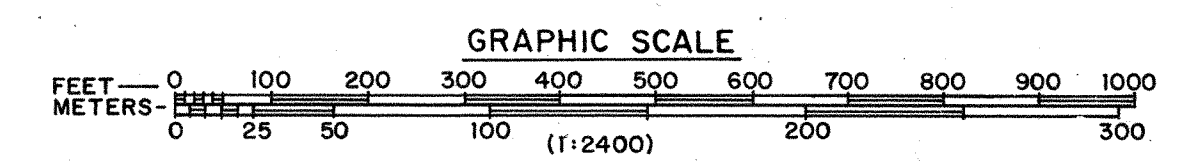
LONG HIGHWAY



NOTE: Theoretical lot lines as established by Proprietors Map and Records Book: - a - Using actual called for distances from Puncatust Line; - b - Using adjusted distances prorated from Puncatust Line to Amesbury Line; - c - Using adjusted distances prorated from Puncatust Line to the southerly line of Proprietors Lot 13, as established by Plan Book 6 page 16. Show only to indicate relationship to actual property line locations, no verification to correctness is intended nor implied. cbl - Indicates Cole Book Line as indicated by recorded data or claim for this parcel. This plat is a graphical representation of property boundaries and does not establish title nor legal boundaries.

* - Indicates substandard lot created by deed after Nov. 1891. See Plat Index for legend to map symbols.

Last revision to master: 2019 (SEP'19)



LITTLE COMPTON

SCALE - 1" = 200'

PREPARED BY STANLEY ENGINEERING, INC.

PLAT 40